

T&G • Pembroke Trolley • Country Homes & Interiors •

# COUNTRY HOMES & INTERIORS



MAY 2015 £4.10  
US\$8.99/AUS\$9.95/NZ\$13  
RECALL 06/05/2015

## Laid-back charm

Make spring cheerful with  
pops of playful pattern

Eat well at  
the weekend!  
Relaxed recipes

T&G FEATURED: MAY 2015

Enter today!  
MY COUNTRY  
BUSINESS  
AWARDS  
2015

'We own a  
bluebell wood'  
Find dream homes,  
views, gardens



## Live with nature

- \* Grow a wildflower meadow
- \* Craft beautiful paper birds
- \* Pedal off on a cycling break

Issued by Marketing April 2015

T&G Woodware Ltd Old Mill Road, Portishead, Bristol, ENGLAND BS20 7BX  
T: +44 (0)1275 841 841 F: +44 (0) 1275 841 800 [www.tg-woodware.com](http://www.tg-woodware.com)



## Southern living

*Are deep drawers an efficient use of space in small kitchens?*

'The advantage is that you can pull a drawer's contents towards you, so you can see and reach whatever you need quickly,' says Rob Whitaker, Creative Director, Fired Earth. 'Drawers make the most of every inch of space, unlike the dark recesses of cupboards and inaccessible shelves. If you're planning to store bottles and small items in a deep drawer, dividers will keep everything upright and in order.'

Moderne fitted **kitchen**, from £25,000, Fired Earth, 0845 293 8798, firedearth.com.



*What is the best way to maximise cupboard space in my kitchen?*

'When planning kitchen storage, consider existing features such as chimney breasts, recesses or under-stair areas that can be used for cupboards,' says Richard Moore, Design Director, Martin Moore. 'A good larder cupboard with drawers and pull-out baskets houses plenty of jars and bottles, ingredients and gadgets. In a bespoke kitchen, even shallow and irregularly shaped spaces can be utilised for extra storage or shelving to show off china and glass.'

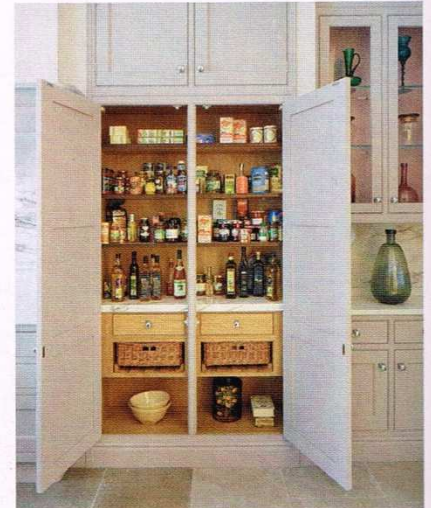
Hand-painted New Classic **kitchen**, from £35,000, Martin Moore, 0845 180 0015, martinmoore.com.



*How can I make the most of a long, narrow kitchen?*

'Your layout may seem limited, but it can be the starting point to a great kitchen if the space is well thought through,' says Steven de Munnich, Design Director, Smallbone of Devizes. 'Use as much of the space below the worksurface as you can; undermount the sink and fit the hob with a flush finish. Keep units at different heights to prevent the room feeling closed in. Reflective materials, such as mirror and glass, enhance a sense of space, as do pale cabinetry, worktops and walls.'

Bespoke Mandarin **kitchen**, from £40,000, Smallbone of Devizes, 020 7589 5998, smallbone.co.uk.



*I'd like a freestanding piece for my country kitchen. Any ideas?*

'A trolley is a practical solution for small kitchens that are lacking work space and storage,' says Jenny Handley, Head of Marketing, T&G Woodware. 'For a classic country look choose solid wood with an antique cream finish and lockable wheels, so it can be moved in and out as needed. A natural hevea solid end-grain worktop provides an additional food prep area, while the deep drawer and slatted shelves keep kitchen essentials close at hand.'

Pembroke **trolley**, £578, T&G Woodware, 01275 841841, tg-woodware.com.



### More companies to try

- Barnes of Ashburton** 01364 653613, barnesofashburton.co.uk.
- Chalon** 01458 254600, chalon.com.
- Davonport** 0845 468 0025, davonport.com.
- Harvey Jones** 0800 389 6938, harveyjones.com.
- Humphrey Munson** 01727 519444, humphreymunson.co.uk.
- John Lewis of Hungerford** 01488 688100, john-lewis.co.uk.
- Kit Stone** 0370 777 0099, kitstone.co.uk.
- Rencraft** 01732 762682, rencraft.co.uk.
- Roundhouse** 020 7297 6220, roundhousedesign.com.
- Second Nature** 01325 505539, sncollection.co.uk.
- Stoneham** 020 8300 8181, stoneham-kitchens.co.uk.
- Woodstock Furniture** 020 8876 0131, woodstockfurniture.co.uk.

Issued by Marketing April 2015